



ROCKY MOUNTAIN

International Student Program



ELEVATE YOUR EDUCATION HERE

Revelstoke | Golden | Invermere | Kimberley | Cranbrook | Fernie | Sparwood | Salmon Arm | Armstrong | Sicamous | Enderby



WHERE IS RMISP?





WHAT MAKES RMISP DIFFERENT?

- Truly Canadian experience in safe and friendly communities
- Exciting monthly activity program (included in fees)
- Outdoor recreation paradise: amazing skiing, water sports, mountain biking, hiking and more!
- Extensive student support, caring staff and homestay families
- Excellent education: interesting classes, sports teams and activities





OUTDOOR RECREATION

- ◆ Skiing/Snowboarding
- ◆ Golfing
- ◆ Hiking
- ◆ Mountain biking
- ◆ Rock climbing
- ◆ Camping
- ◆ Fishing
- ◆ Rafting/Lake life
- ◆ and more...



COMMUNITY AMENITIES AND ACTIVITIES

- ◆ Dance studios
- ◆ Tennis and racquetball courts
- ◆ Horseback riding
- ◆ Martial arts / Dance classes
- ◆ Indoor swimming pools
- ◆ Ice rinks and curling rinks
- ◆ Skateboard parks
- ◆ Youth centres
- ◆ Recreation and fitness centres
- ◆ Beachfront parks
- ◆ Local festivals, music and culture
- ◆ and more...





RMISP SCHOOLS & COMMUNITIES



- ◆ 13 schools in 11 locations
- ◆ Semester system for grade 10-12
- ◆ Modern facilities and high academic standards
- ◆ Small schools with supportive teachers
- ◆ Low ratio of international students to Canadian students
- ◆ Graduating students have gone on to study at top universities

UNIQUE ELECTIVE COURSES

- | | |
|--------------------------------------|-----------------------------|
| ◆ Outdoor Education | ◆ Aviation |
| ◆ French Immersion | ◆ Law |
| ◆ Electronics and Robotics | ◆ Business Education |
| ◆ Chef Training | ◆ Hockey Skills Development |
| ◆ Computer Studies and Digital Media | ◆ Theatre Production |



SPORTS TEAMS AND CLUBS



Popular sports teams: soccer, volleyball, basketball, rugby, ski/snowboard, track and field, golf, cross-country running, baseball, curling and swimming

Unique to some schools: mountain biking, weight training, rock climbing, tennis, badminton, robotics, art club, leadership, drama, volleyball, yoga













DOWNHILL / ALPINE SKI RESORTS

- Revelstoke: *Revelstoke Mountain Resort*
- Golden: *Kicking Horse Mountain Resort*
- Invermere: *Panorama Mountain Resort*
- Kimberley/Cranbrook: *Kimberley Alpine Resort*
- Fernie/Sparwood: *Fernie Alpine Resort*
- Salmon Arm/Armstrong/Enderby: *Silverstar Resort (Vernon)*

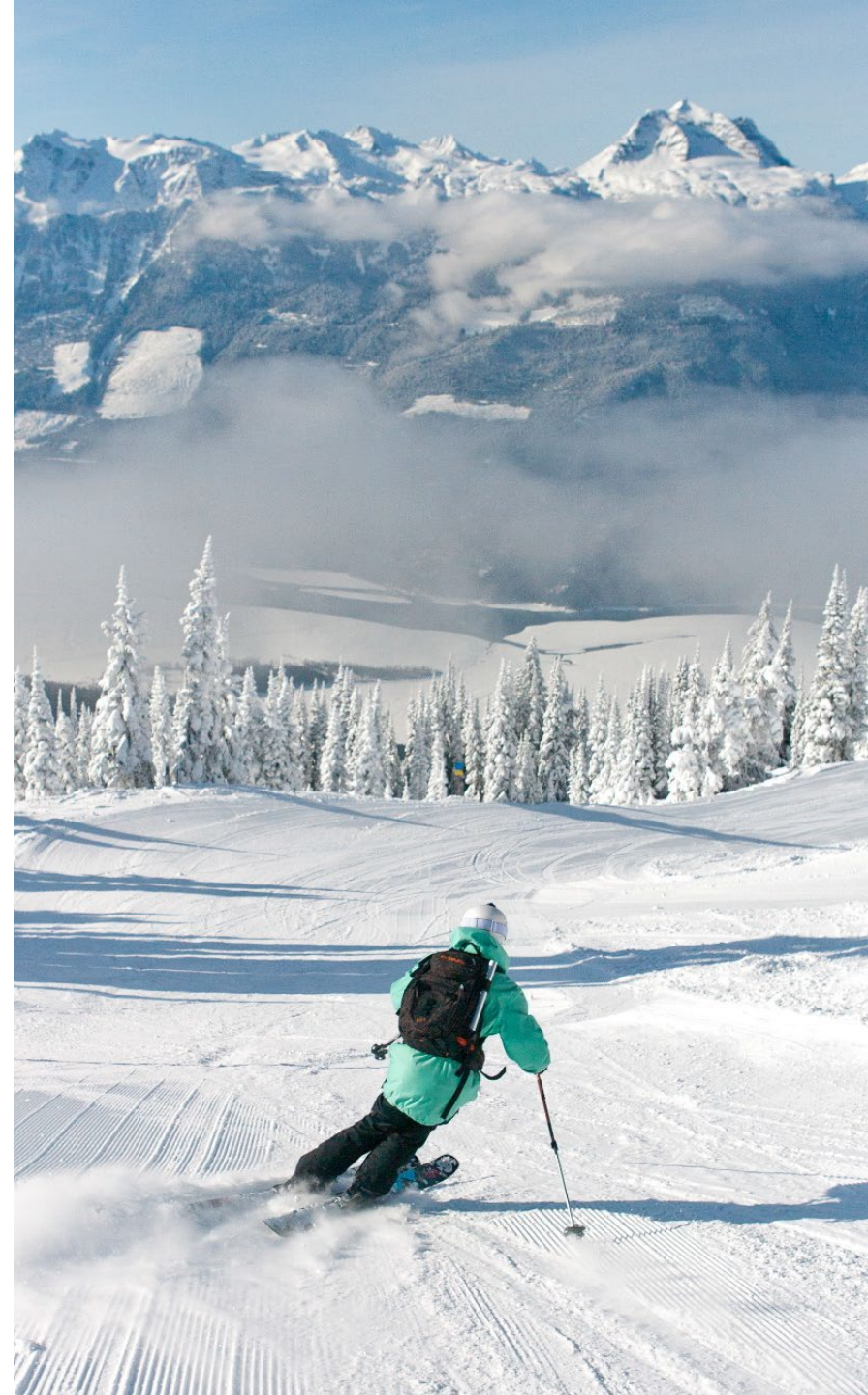
All locations have Nordic (Cross Country) skiing and mountain biking trails





REVELSTOKE

- Population: 8,700
- Revelstoke Mountain Resort known for powder and steepest vertical descent of any North America ski area
- Popular school courses: Outdoor Education, Criminology, Volleyball
- Revelstoke Secondary – gr. 8-12, 450 students





GOLDEN

- ◆ Less than 3 hours west of Calgary and surrounded by six of Canada's national parks
- ◆ Population: 6,750
- ◆ Kicking Horse Mountain Resort: ranked one of the top ten ski resorts in North America. Shuttle bus from downtown to ski resort
- ◆ Ski racing, mountain biking, rock climbing, movie theatre, bowling and more!
- ◆ Golden Secondary – gr. 8-12, 500 students





INVERMERE

- Population: 4,000 in town, 10,000 in larger area (20,000+ in summer)
- Shuttle from downtown to Panorama Alpine Resort (20 km)
- Lakeside resort community with unique boutiques, shops and restaurants
- Lake Windermere Whiteway – skate for 30 km on the frozen lake in winter
- David Thompson Secondary – gr. 8-12, 500 students





KIMBERLEY

- Population: 9,000
- School to Alpine Resort: 4 km
- Set in the mountains but close to Canadian Rockies Airport and Cranbrook
- Popular: Hiking, Mtn. Biking, Skiing, Rock Climbing
- Selkirk Secondary – gr. 8-12, 500 students





CRANBROOK

- Population: 25,000+
- Offers a shopping mall and a wide variety of shops, restaurants, fast food, services
- RMISP shuttle to Kimberly Alpine Resort on weekends
- RMISP's largest school offering many elective/academic options
- Aquatic centre, ice skating, movie theatres, rock climbing, hiking/biking, and lakes close by
- Mount Baker Secondary – gr. 10-12, 1000 students
- Laurie Middle School – gr. 7-9, 350 students





SPARWOOD

- Population: 4,500
- Friendly small city surrounded by nature
- Aquatic centre, mountain biking, golf
- 35 km to Fernie Alpine Resort
- Sparwood Secondary – gr. 8-12, 350 students





FERNIE

- Population: 6,500
- World famous powder skiing at Fernie Alpine Resort
- Historic downtown with many trendy restaurants and shops
- Popular tourist destination
- Fernie Secondary – gr. 8-12, 400 students





SICAMOUS

- Population: 3,500
- Houseboat capital of Canada and surrounded by lakes
- Excellent outdoor recreation, all year round but especially for water sports in the summer season
- Close to Salmon Arm
- Eagle River Secondary – gr. 7-12, 200 students





SALMON ARM

- Population: 21,000
- Hiking, mountain biking and water sports are popular here
- Lots of restaurants, services and shops
- Public bus to SilverStar Mountain Resort
- Salmon Arm Secondary – gr. 11/12, 650 students
- J.L. Jackson Secondary – gr. 9/10, 650 students





ENDERBY

- Population: 4,000+
- Surrounded by five lakes and the Shuswap river
- Canoeing, kayaking, fishing, boating and hiking are popular
- Charming and friendly small city with Salmon Arm only 15 minutes away
- A.L. Fortune Secondary – gr. 7-12, 400 students





ARMSTRONG

- Population: 5,000
- Known as “heart of country” – great for horseback riding/riding lessons and many other activities
- The larger city of Vernon is only 20 minutes from Armstrong
- Bus to SilverStar Mountain –less than 1 hour
- Pleasant Valley Secondary – gr. 9-12, 500 students





HOMESTAY PROGRAM

- ◆ in-house homestay program carefully selects and matches families to students
- ◆ host families are trained and supported by RMISP staff
- ◆ families attend orientations and home inspections every year
- ◆ Danielle Warren – Director of International Education is your custodian

HOMESTAY COORDINATORS

- ◆ Low ratio of students to homestay coordinators means greater support for students (average ratio is less than 25:1)
- ◆ Homestay coordinators provide support in many ways:
 - ◆ Airport pick-up/drop off
 - ◆ Regular communication with students:
 - ◆ weekly group meetings at school
 - ◆ individual communication in person, by email, or phone
 - ◆ follow up with students who state in online surveys that they are having issues
 - ◆ Chaperoned program activities









INCLUDED PROGRAM ACTIVITIES

RMISP provides included monthly program activities, and they are an exciting way to:

- ◆ explore beyond your local community (Some activities are 2 day excursions, which include trips to larger cities in Canada.)
- ◆ learn more about Canadian culture
- ◆ try new things and make new friends

SAMPLE MONTHLY ACTIVITY SCHEDULE

Activity program: \$1000+ value each semester!

September:	River rafting experience
October:	Overnight sightseeing trip to Banff and Calgary, Alberta
November:	Curling activity
December:	Ski/Snowboard day
January:	Cross-country ski day
February:	Ski/Snowboard day
March:	Hike and Hot Springs visit
April:	Overnight City Sightseeing Trip
May:	Ropes course / Outdoor Adventure day
June:	Farewell / BBQ parties





MONTHLY SCHOOL-BASED ACTIVITIES

Activities include:

- ◆ Pumpkin carving
- ◆ Decorating gingerbread houses
- ◆ Canadian buddy lunches
- ◆ BBQ, Karaoke
- ◆ Games / trivia / movies and more!





SEE VANCOUVER AT SPRING BREAK

RMISP offers an optional 5-day tour to Vancouver during Spring Break!



- ◆ Return flight included to maximize your time in the city
- ◆ Includes flight, hotels, transportation, entrance fees, some meals, adult supervision
- ◆ Visit Vancouver's best attractions, including Capilano Suspension Bridge, Stanley Park, Metrotown Mall, Pacific Centre, Granville Island, FlyOver Canada and more!













FOLLOW US ONLINE

rminternational.ca



/rmisp

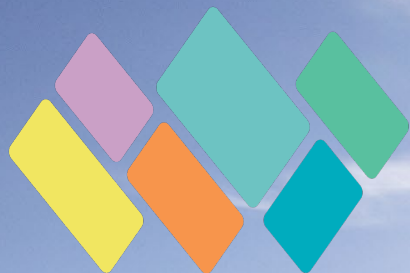


CHECK OUT OUR RMISP VIDEO!

<https://www.youtube.com/watch?v=qHliNd21ij0&t=28s>



@RockyMountainISP



ROCKY MOUNTAIN

International Student Program

Thank you!